



CONTINUOUS IMPROVEMENT • INTEGRITY • RESPECT • CLIENT FOCUSED

**GISBORNE IS OFF TO GREENLAND TO WORK WITH IRONCLAD METALS & MERIT CONSULTANTS BUILDING AN ANORTHOBSITE PROCESSING PLANT FOR HUDSON RESOURCES LTD**



White Mountain Anorthosite Project



A very large, high purity supply of Anorthosite (calcium feldspar) for the E-Glass market

The Anorthosite being mined for processing



The mine is located at the southern end of Greenland



Hudson Resources is a Canadian based mining and technology company focused on developing the unique White Mountain (Qaqortorsuaq) anorthosite (calcium feldspar) mine in Greenland to bring green products to the world. The White Mountain mine will have multiple applications in the fiberglass, alumina, filler, paint and white cement markets.

The mine adheres to the strictest environmental standards and does not use any chemicals or water for processing. The mine is permitted for 50 years and has a current mine life of over 100 years with the deposit being open in all directions. Construction is underway and the mine will be in production in the second half of 2018.

Gisborne’s workforce will start to arrive mid-May and the project is scheduled to complete by Fall 2018. Along with the unique challenges of working in another country, travel to and from the project will be a two day trip culminating in an 80 km helicopter or boat ride to get from Kangerlussuaq, Greenland's international airport, to the project location as there are no roads connecting the two locations.

## **RIO TINTO CEO PRESENTS GISBORNE WITH CEO AWARD FOR 2017 DURING CEREMONY AT DIAVIK DIAMOND MINE**

From left to right: Neil Friesen, John Dejadins, Steve Sarginson, Chad Greenough, JS Jacques (Rio Tinto CEO), Dave Ganzeveld, Dain Neis, Ed Floesser. Missing from picture is Scott Clarkson who was on turnaround.



As noted in the last edition of GMail, Gisborne, along with Nahanni Contractors and Ryfan Electric were nominated and selected from over 3000 contractors world wide to be the recipients of the 2017 Rio Tinto CEO Safety Award in

the Best Contractor Category . In presenting the award, Rio Tinto's CEO, Jean Sebastian Jacques stated: *"It is a credit to Gisborne Industrial, and your partners, that none of you have incurred a lost time injury in five years. I was even more*

*pleased to hear that you and the Diavik team have developed a strong interdependent safety culture. As a business Rio Tinto relies heavily on our contractor partners and you are setting the example and leading the way".*

### **SILVERTIP MINE**

Gisborne was recently awarded the sustaining capital contract for Coeur Mining's Silvertip Mine in northern British Columbia, located 15 km south of the Yukon border. The mine is one of the industry's newest and highest grade silver - zinc - lead mines.



## FIRE PROTECTION DIVISIONS CONTINUE TO BE BUSY

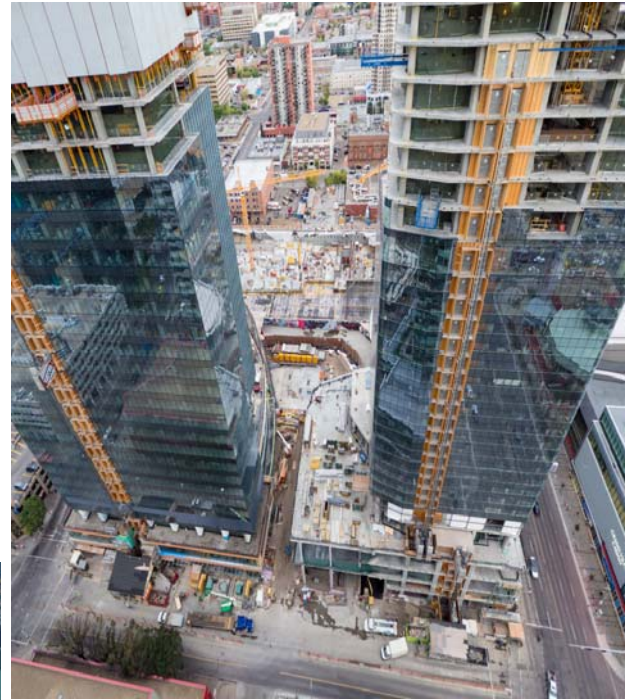
With over 35 active projects and several more large projects pending, our BC and Alberta Fire Protection Divisions continue to be busy. Our Alberta Division currently employs 35 field personnel, with 14 of those being apprentices (40%), while our BC Division currently employs 37 field personnel with 19 of those being apprentices (51%). Our crews are supported by our division managers, estimators and our design group bringing our total number of Fire Protection employees to 90 at this time.

**CONSTRUCTION OF THE NEW G3 GRAIN TERMINAL IN VANCOUVER IS WELL UNDERWAY. GISBORNE WILL BE ON SITE IN THE NEAR FUTURE TO BEGIN THE INSTALLATION OF THE VARIOUS FIRE PROTECTION & ALARM SYSTEMS.**



### SHUTDOWN PROJECT IN CASTLEGAR BC

Gisborne is preparing to send a crew to Castlegar in June to work on a shutdown with Valmet at the Zellstoff Celgar Pulp Mill. There is a significant amount of pre-planning required prior to our crews commencing work on the project. The project will involve the rebuild of the Digester Screen and should take approximately 12 days to complete once we are on site.



**WORK CONTINUES AT EDMONTON'S TALLEST BUILDING — STANTEC'S 69 STOREY TOWER IN THE DOWNTOWN ICE DISTRICT**

### LEADERSHIP TRAINING

Alongside Gisborne's internal Leadership Training Program all of our supervision in all of our divisions have completed the Leadership for Safety Excellence Program. COURSE TOPICS INCLUDE:

- the role of the supervisor
- safety responsibilities of managers, supervisors and workers
- company culture
- hazard assessments
- safety inspections
- incident investigations
- worker training and communication

Gisborne is committed to ensuring our leaders are trained to provide effective leadership in the areas of safety, quality and productivity on all of our projects.

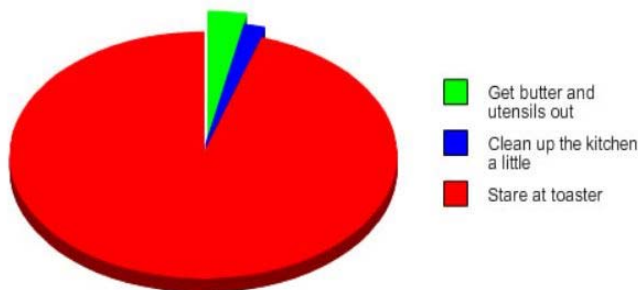
## SAFETY IS A 24/7 PROPOSITION

Spring has sprung or is about to do so and all those outdoor projects are calling you to action so just a reminder that 'safety first' doesn't stop when you leave the jobsite.

- Check your ladder to ensure it is secure before starting your climb / is it on level ground? Do you need to tie it off? How close is it to any power lines coming into the house?
- Check your lawnmower to ensure it is in good working order before you 'fire it up'. Check your lawn for any debris / rocks that may have gathered over the winter and remove them before they become projectiles
- Check your BBQ - clean the burners/fuel lines to ensure no blockages before lighting it
- Apply Gisborne's **STOP - THINK- ACT** checklist before you start... your fingers and toes will thank you!



## What I do while waiting for my toast to pop up



## GRAPHIC EVIDENCE

This graph is meant to give you a chuckle and to remind you that in the last GMAIL we included two graphs showing our corporate results in the areas of safety and quality. We will be updating these at the end of April and will include the updated graphs in your May pay stubs as we feel it is important to keep you informed re our performance in these key areas.

## BENEFIT QUESTIONS?

### CLAC MEMBERS

Benefit Office	1.888.600.2522
Forms/courses/contact info	<a href="http://www.clac.ca">www.clac.ca</a>
CLAC Retirement Member Care	1.800.210.0200
Employee/Family Assistance Program	1.844.880.9142
	<a href="http://www.workhealthlife.com">http://www.workhealthlife.com</a>

### CLAC OFFICES:

Lower Mainland Office	1.800.331.2522
Fort St John Office	1.800.331.2522
Kelowna Office	1.866.757.2522
Edmonton Office	1.877.863.5154

### GISBORNE STAFF / NON-UNION EMPLOYEES

Benefit Questions <sup>1</sup>	1.877.422.6487
RRSP Questions	1.888.727.7766
Confidential Counselling	1.877.630.6701

### EMPLOYEES ON GISBORNE BENEFIT PLAN

Be sure to register for electronic access to your benefit plan for on line claims, forms and more. Go to: <http://www.inalco.com/english/index.jsp> and click on the **Cyber Client** box in the upper left hand corner of the webpage to register.

<sup>1</sup> Industrial Alliance (extended health/dental coverages) now has an app for iPhone or Android. You can use the app to file your claim electronically or call up an electronic copy of your benefit card .