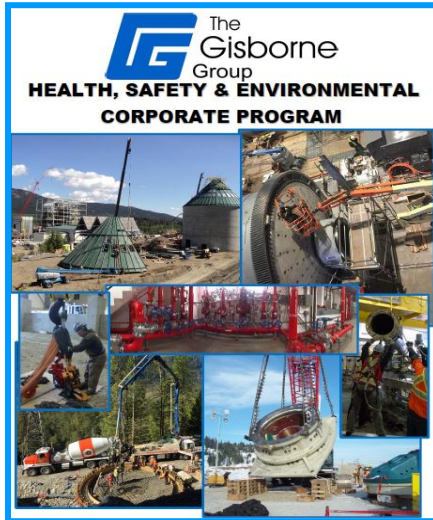




CONTINUOUS IMPROVEMENT - INTEGRITY - RESPECT - CLIENT FOCUSED

CORPORATE HSE MANUAL UPDATED

As part of Gisborne's Continuous Improvement process, Dennis Brode, Gisborne's Corporate HSE Director, recently completed a major re-write of our HSE program. A comprehensive training strategy will be implemented in the coming months for all personnel.



Some of the key changes to the HSE Program include:

- ◆ Re-structure of the Hazard Analysis Section including the Risk Matrix and Project Hazard Analysis processes
- ◆ Transition from Safe Work Plans (SWP) to a Job Hazard Analysis (JHA) model
- ◆ Updated Injury Management processes
- ◆ Amended Daily Observation Form and Inspection Matrix
- ◆ Updated HSE program to WHMIS 2015 standards and updates to Environmental standards section
- ◆ Adjusted the Incident Investigation process and related documentation

Gisborne Industrial, along with Nahanni Construction and Ryfan Electric have been selected as the winner of the Rio Tinto 2017 Chief Executive Safety Awards – Best Contractor category for their work and safety record at the Diavik Diamond Mine in the NW Territories. The Chief Executive Safety Awards are the highest recognition of safety excellence in the Rio Tinto Group. The Best Contractor category was introduced in 2016 in recognition of the critical role Rio Tinto's contractor workforce – over 3000 world-wide - plays in the success of their world-wide operations.

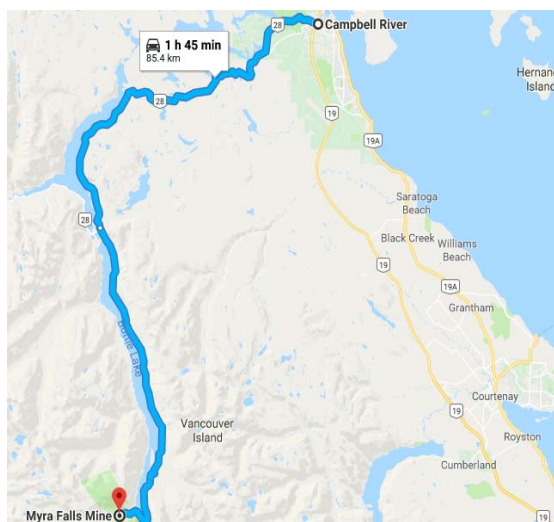


In a letter announcing the award, Rio Tinto's CEO, Jean Sebastian Jacques, stated:

"It is a credit to Gisborne Industrial, and your partners, that none of you have incurred a lost time injury in five years. While this is undoubtedly an impressive result, I was even more pleased to hear that you and the Diavik team have developed a strong interdependent safety culture. The assessors who visited the site also noted your passion to integrate our Critical Risk Management program and eliminate fatality risks in the workplace. As a business Rio Tinto relies heavily on our contractor partners. You, Nahanni Construction and Ryfan Electric Limited are genuinely leading the way in demonstrating how we can all work together and keep our people safe. Thank you for your ongoing commitment to Rio Tinto and improving safety for everyone who works with us."



The mine is located 90 km SE of Campbell River BC, on Vancouver Island.



Crusher being disassembled



NYRSTAR'S MYRA FALLS MINE - CAMPBELL RIVER BC

Regrind Mill Gear & Guard Cleaning



Gisborne has been contracted to assist in the re-commissioning of this lead/zinc mine that has been shut down for several years.

Flotation Blower #3 Installation



A lot of the equipment at the mine has not been run for some time presenting unique challenges to our crews in terms of being able to disassemble the pumps and motors in order to assess whether they can be put back into service or if they require re-building or replacement.

DIAVIK DIAMOND MINE- NW TERRITORIES

Gisborne is entering their 12th year at Diavik providing maintenance and construction services. As Diavik continues to develop its underground mining they require de-watering systems to remove the water that leaches into the tunnels in order to be able to work in these areas.

IBERDROLA COMMISSIONING SUPPORT AT BIO MASS PLANTS IN FORT ST JAMES AND MERRITT BC

Gisborne continues to provide crews to assist with the commissioning of two bio-mass co-generation plants. We were also involved in the original construction of these plants and due to our strong performance we were contracted to assist with the commissioning aspect of the projects. Both are scheduled to go online in 2018.

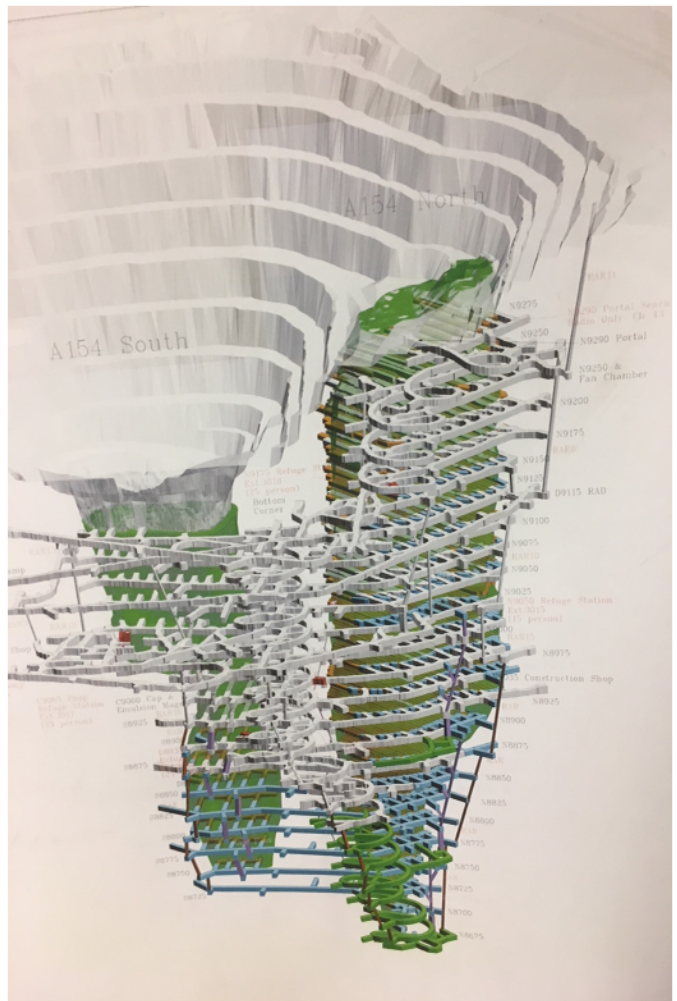
Merritt Plant



Diavik Underground De-Watering pump station



“Journey to the Centre of the Earth” - underground mining at Diavik now down over 800 meters.



FIRE PROTECTION

Gisborne's BC and Alberta Fire Protection Divisions continue to be busy with over 40 projects underway.

In BC we have recently been awarded the Engineering, Design and Installation of the Fire Protection Systems for G3—a state of the art multi million dollar grain handling system in North Vancouver. We also have multiple commercial/residential tower projects underway with a significant amount of tenders to bid on for work later this year and into 2019.

In Alberta we continue to work on the installation of the fire protection systems for the 69 storey Stantec Tower along with several other projects in the downtown Edmonton 'ice District' as well as other installations in and around the Edmonton area.

Construction underway at G3 in Vancouver Waterfront



View of new Ice District in Edmonton



Did you know that Gisborne Industrial Construction Ltd. is COR certified in British Columbia, Alberta, The Yukon, NW Territories and Nunavut?

A Certificate of Recognition (COR) is awarded to employers who develop health and safety programs that meet established standards. A **COR** shows that the employer's health and safety management system has been evaluated by a certified auditor and meets provincial standards.—and more importantly, it has been embraced and practiced by our employees company wide.

BENEFIT QUESTIONS?

CLAC MEMBERS

Benefit Office	1.888.600.2522
Forms/courses/contact info	www.clac.ca
CLAC Retirement Member Care	1.800.210.0200
Employee/Family Assistance Program	1.844.880.9142
http://www.workhealthlife.com	

CLAC OFFICES:

Lower Mainland Office	1.800.331.2522
Fort St John Office	1.800.331.2522
Prince George Office	1.800.331.2522
Kelowna Office	1.866.757.2522
Edmonton Office	1.877.863.5154

GISBORNE STAFF / NON-UNION EMPLOYEES

Benefit Questions ¹	1.877.422.6487
RRSP Questions	1.888.727.7766
Confidential Counselling	1.877.630.6701

EMPLOYEES ON GISBORNE BENEFIT PLAN

Be sure to register for electronic access to your benefit plan for on line claims, forms and more. Go to:

<http://www.inalco.com/english/index.jsp> and click on the **Cyber Client** box in the upper left hand corner of the webpage to register.

¹ Industrial Alliance (extended health/dental coverages) now has an app for iPhone or Android. You can use the app to file your claim electronically, call up an electronic copy of your benefit card (for prescriptions or dentist claim) or track recent claims.