



CONTINUOUS IMPROVEMENT - INTEGRITY - RESPECT - CLIENT FOCUSED

AND THE WINNER IS...

CCA is pleased to present the Gisborne Group with the 2018 CCA National Safety Award.

Gisborne's safety leadership in the industry is exemplified through the implementation and management of their comprehensive health and safety management system, which has resulted in 0 lost-time incidents for the past 5 years, and multiple awards for its safety program and records. This program's management systems for safety have been consistently and successfully applied across its

commercial, residential and institutional construction divisions. Gisborne believes that a key element of the organization's success is its commitment to ever-improving its safety management systems.



Dennis Brode, (right) Gisborne's Corporate Director of HSE, receiving the CCA Award from the award sponsor



Canadian Construction
Association
CCA Awards

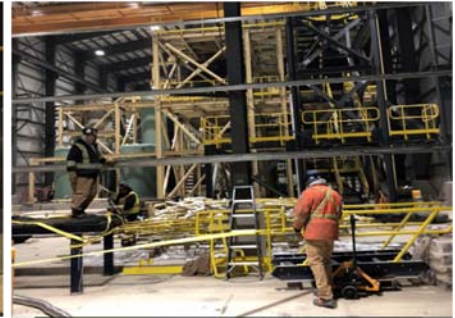
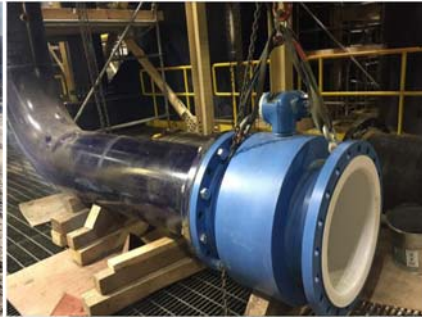
 The
Gisborne
Group
**HEALTH, SAFETY & ENVIRONMENTAL
CORPORATE PROGRAM**



Gisborne found that through the implementation of the Job Hazard Assessments (JHA), workers are more readily engaged in the development of new Safe Work Practices for specific tasks – a participatory process that puts new ideas into practice and connects the workforce in a positive way with Gisborne's corporate culture.

2019 INDUSTRIAL CONSTRUCTION PROJECTS

EAGLE GOLD MINE -YUKON



Gisborne's mechanical and piping crews continue their work at Victoria **Gold Corp's Eagle Gold Mine** being constructed in the Yukon. Work includes the installation of conveyors, process piping and various mechanical components. When completed this will be the largest Gold Mine in Yukon's history.

HIGHLAND VALLEY COPPER MINE -KAMLOOPS



Gisborne's workforce at Teck's Highland Valley Copper Mine are nearing completion of the installation of a new ball mill circuit. Work is scheduled to wrap up April 25th with a small commissioning team staying on to assist the mine to bring the new mill online.

KEMESS MINE -NORTHERN BC



Gisborne is currently installing the concrete foundations for a new water treatment plant at the Kemess Mine, 430 km NW of Prince George. Once the civil work is completed, steel erection and mechanical and piping work will commence with work scheduled to run throughout the balance of 2019.

2019 FIRE PROTECTION INDUSTRIAL PROJECTS

G3 GRAIN TERMINAL - NORTH VANCOUVER BC



Our BC Fire Protection Division continues with the installation of the Fire Protection Systems for the G3 Grain Terminal being constructed in North Vancouver. Upon completion the facility will have the capacity to handle 40% of the grain moving through the Port of Vancouver.

CAVENDISH FARMS - LETHBRIDGE AB



Our Alberta Fire Protection Division also continues with the installation of the Fire Protection Systems for Cavendish's Frozen Potato Plant in Lethbridge AB. The plant will process over 9,000lb of potatoes annually.

CONOCO PHILLIPS FIRE PROTECTION SKID - NISKU AB



Gisborne's Alberta Fire Protection Division has been contracted to provide a fully assembled Fire Protection Skid for Conoco Phillips. When complete, it will be shipped to the project site for installation as a complete unit.

Why does someone believe you when you say there are four billion stars, but checks when you say the paint is wet?



Remember that for every Gisborne employee, we commit to Gisborne's culture of safety in all that we do. This includes the management of injuries across all divisions and operations. As a Certificate of Recognition (COR) accredited company in Injury Management, that means Gisborne's employees suffering an injury in the workplace will work directly with Gisborne's Injury Management Coordinator - Gisborne's Corporate Director of HSE, Dennis Brode - in the effective implementation and administration of ALL facets of Gisborne's Injury Management Program. Such cooperation is integral to the success of Gisborne's Injury Management Program and the positive outcomes we have realized in the management of workplace injuries.

The ultimate goal of the program is to enable the injured worker to remain connected with their workplace during their recovery and to facilitate a return to full duties.



A smartphone user is browsing at a funeral. He asks the priest sitting next to him, "do you have the Wi-Fi password"? Looking at him in disgust the priest exclaims, "Respect the dead"! The smartphone user replies, "all lowercase"?

NEW BUSINESS VENTURE FOR BC FIRE PROTECTION DIVISION

As more municipalities are insisting on a Building Fire Protection Design Drawing to be submitted prior to issuing a building permit, Gisborne has been able to create a niche market in this area due to our in-house expertise.

Steven Lee, Gisborne's Fire Protection Engineer, has completed 19 designs to date for various clients. Given the number of new projects in the Lower Mainland, we anticipate this area continuing to develop as an additional service we can offer to our clients.



Gisborne's 2 corporate offices have HSE committees that hold regularly scheduled meetings to review health, safety and environmental issues, concerns and initiatives as well as conduct a monthly HSE audit of the building and grounds to identify any HSE issues/hazards. Currently in Burnaby the HSE Committee is chaired by Dennis Brode with members including Sayi Thavakumar, Kiran Mann, Jim Gilley, Rose Singh, Colin Tait & Ian Gibson. Our Nisku HSE Committee consists of Andrew Penner (chair), Larry Corbett, Mark Karas and Greg Schlemko.

BENEFIT QUESTIONS?

CLAC MEMBERS

Benefit Office	1.888.600.2522
Forms/courses/contact info	www.clac.ca
CLAC Retirement Member Care	1.800.210.0200
Employee/Family Assistance Program	1.844.880.9142

(<http://www.workhealthlife.com>)

GISBORNE STAFF / NON-UNION EMPLOYEES

Benefit Questions	1.877.422.6487
RRSP Questions	1.888.727.7766
Confidential Counselling	1.877.630.6701