



CONTINUOUS IMPROVEMENT • INTEGRITY • RESPECT • CLIENT FOCUSED

## ANOTHER QUALITY INSTALLATION BY OUR BC FIRE PROTECTION DIVISION RESULTS IN A NOMINATION FOR A 2020 AWARD OF EXCELLENCE FROM THE VANCOUVER REGIONAL CONSTRUCTION ASSOCIATION (VRCA).

2020 Awards of Excellence Nominated Projects - August 4 Edition



2020  
AWARDS OF  
EXCELLENCE

PROJECT NAME

G3 Terminal Vancouver

OWNER

G3 Canada Ltd.

NOMINATED COMPANIES

Gisborne Industrial Construction Ltd.

The G3 Terminal Vancouver will optimize grain receiving, storage., and shipping operations on Canada's West Coast and is the first new grain terminal to be constructed on the Vancouver waterfront since the 1970's. **Gisborne's** contract included the design, supply and installation of the Terminal's fire protection and detection systems. The scope included installation of pre-action sprinkler systems and standpipes, manual deluge systems, dock wet standpipes, a diesel fire pump, fire alarm & detection systems, dry chemical suppression systems and explosion isolation systems. Kudos to our team— **Sandy Chen**, Senior Designer, **Steven Lee**, Engineering Manager, **Valerie Lefebvre**, Project Manager, **Jim Gilley**, Project Foreman, and our great crew for a job well done!



## ALBERTA FIRE PROTECTION DIVISION - FEATURED PROJECT

Once completed, the **ROQUETTE PEA PROCESSING PLANT** in Portage La Prairie, Manitoba would be the largest pea processing facility in the world, employing about 150 people. An additional 350 construction jobs are also expected. Roquette will need about 125,000 metric tonnes of yellow peas per year to meet their processing targets.



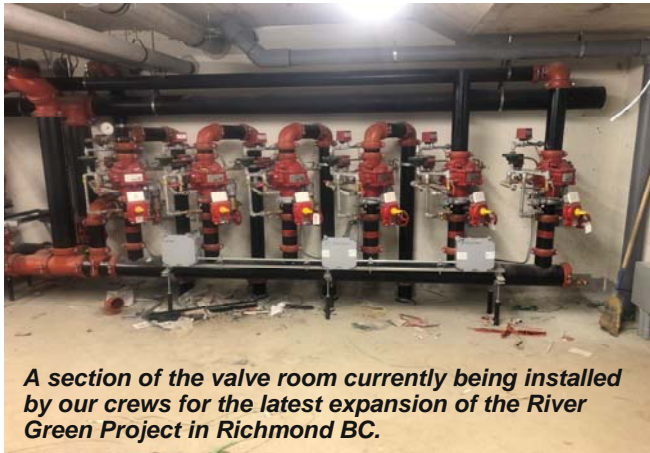
*Roquette Pea Processing Plant—Portage La Prairie, Manitoba*

Gisborne chose to staff this project from our Alberta Division given the availability of crew members and the expertise of our foremen - **Larry Corbett** and **Cam Stewart**. To service the project our crews rotate on a 21 & 7 cycle and have been on site since April 2020. Completion of the installation is expected towards the end of September 2020 with commissioning to follow. **Nima Dallalzadeh** from our BC Division is the designated Project Manager for the project with assistance from **Andrew Penner**, our Alberta Fire Protection Manager.





## BC FIRE PROTECTION DIVISION—FEATURED PROJECTS



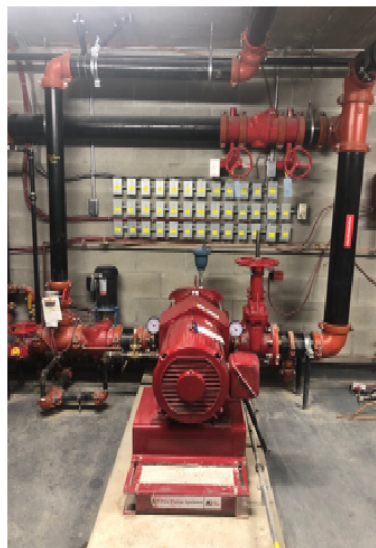
*A section of the valve room currently being installed by our crews for the latest expansion of the River Green Project in Richmond BC.*

Gisborne continues to design and install sprinkler systems at the ever-growing **RIVER GREEN PROJECT** in Richmond BC. When completed, the 25 buildings of the River Green complex will cover 11 hectares on the south shore of the Fraser River, at the Olympic Oval location in Richmond. Construction started in 2011 and will continue into the mid 20's.

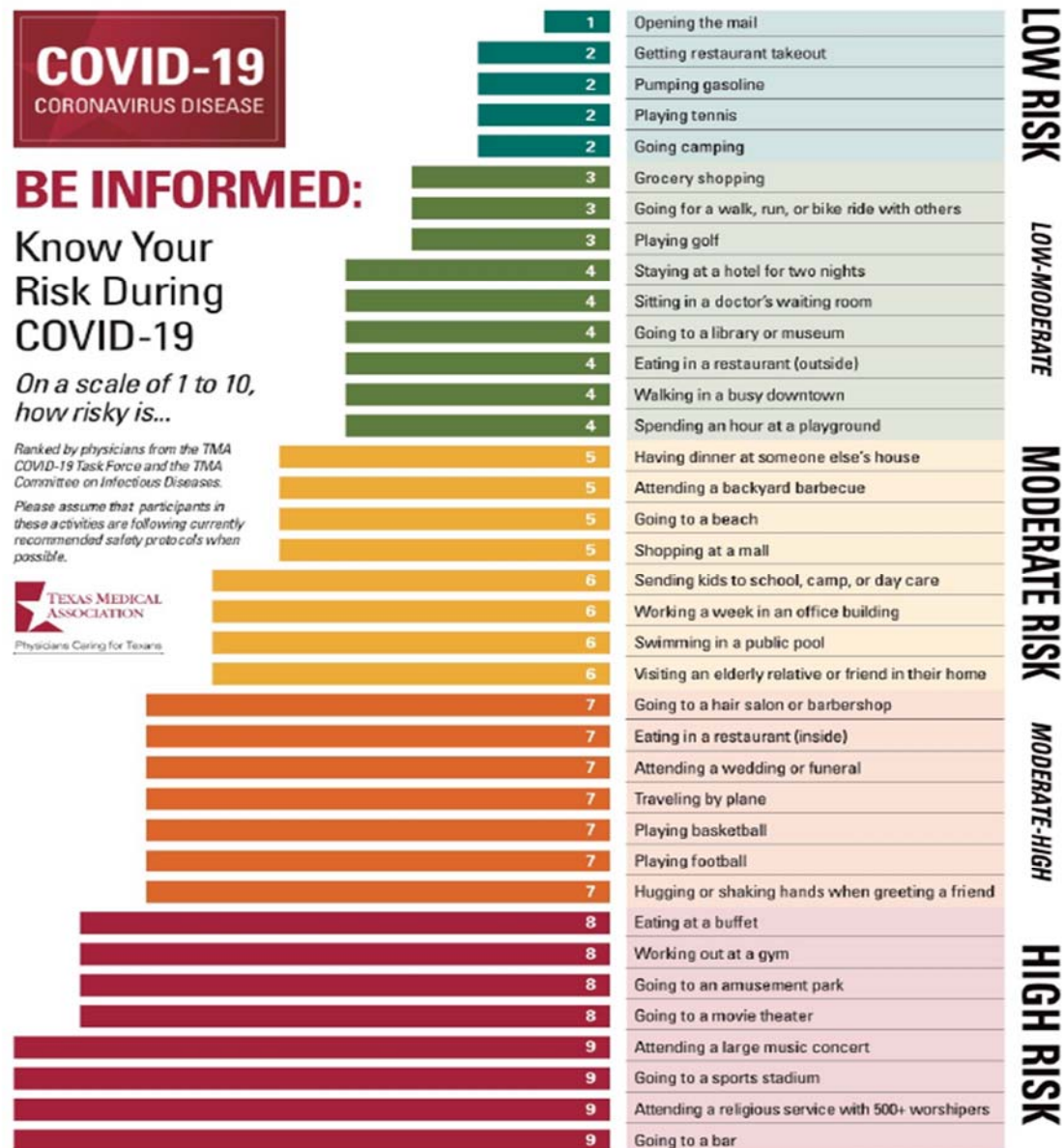


*Sales center model showing Olympic Oval, current buildings and future construction sites in the foreground*

Valve room and fire pump installations at the new **SAFEWAY AT ARBUTUS VILLAGE** in Vancouver BC -part of the total re-development of the 7 acre Arbutus Mall. The four buildings replacing the 1970s indoor mall will offer a total of 269,000 sq ft of commercial space and over 500 homes, including 243 market rental homes within the future Block C and Block D buildings reaching up to 12 storeys in height. Construction of the total project is currently 50% complete.



*The worst thing about parallel parking is witnesses.*



## BENEFIT QUESTIONS?

### CLAC MEMBERS

Benefit Office 1.888.600.2522  
Forms/courses/contact info [www.clac.ca](http://www.clac.ca)  
CLAC Retirement Member Care 1.800.210.0200  
Employee/Family Assistance Program 1.844.880.9142  
(<http://www.workhealthlife.com>)

### CLAC OFFICES:

Lower Mainland Office 1.800.331.2522  
Fort St John Office 1.800.331.2522  
Kelowna Office 1.866.757.2522  
Edmonton Office 1.877.863.5154  
Calgary Office 1.403.686.0288

### GISBORNE STAFF / NON-UNION EMPLOYEES

Benefit Questions<sup>1</sup> 1.877.422.6487  
RRSP Questions 1.888.727.7766  
Confidential Counselling 1.877.630.6701

### EMPLOYEES ON GISBORNE BENEFIT PLAN

Be sure to register for electronic access to your benefit plan for on line claims, forms and more. Go to:  
<http://www.inalco.com/english/index.jsp> and click on the **Cyber Client** box in the upper left hand corner of the webpage to register.

<sup>1</sup> Industrial Alliance (extended health/dental coverages) now has an app for iPhone or Android. You can use the app to file your claim electronically or call up an electronic copy of your benefit card.