

***CONTINUOUS IMPROVEMENT - INTEGRITY - RESPECT - CLIENT FOCUSED***

One of Gisborne's recent initiatives has been to develop our Industrial Fire Protection Work in Canada and worldwide. We have seen success through the efforts of Theodore Malapanis, Gisborne's Senior Project Specialist for Industrial Fire Protection, and his skilled team. We are enthusiastic to see what the future holds in this area and how we can introduce our CSMP (Civil, Structural, Mechanical and Piping) expertise to these clients to extend our footprint in the international marketplace.



Photos of work being done on one of the pre-fabricated skid-mounted valve skids ready to ship to our project in the Dominican Republic. This prefab methodology ensures commonality and consistency between the existing and new facilities as well as reduces the on-site labour requirements.

*There is a new machine in the gym. After using it for 30 minutes, I felt really sick. Maybe I bought too many chocolates.*

## INDUSTRIAL FIRE PROTECTION DESIGN PROJECTS

- Endeavor Silver's Teronerra Silver Mine Project located in San Sebastian del Oeste
- Newmont's "Peñasquito Gold Mine Project" located northwest of Mexico City
- Eastern Mining's "The Vares Project" in Bosnia which contains two advanced silver deposits, Veovaca and Rupice.
- Artemis Gold's Blackwater Gold Project in British Columbia
- GCM Mining's The Toroparu Gold Mine Project situated in the highly prospective Upper Puruni River Region of western Guyana.
- Hudbay's Copperworld Mine Project in Tucson Arizona
- Arcelor Mittal's Las Truchas iron ore mine revamp project in Michoacán Mexico
- Electra's Flagship cobalt mine project in Ontario, Canada

## NEW CSMP PROJECTS

**Diavik Diamond Mine** - NW Territories. Gisborne has recently been awarded additional work to complete a piping removal project at the mine.

**Newcrest - Brucejack Mine** - NW BC. also recently awarded Gisborne's CSMP Division additional work for 3 piping projects, two of which involve HDPE pipe installation.

**Sabina Backwater Mine**—Nunavut - CGT Project. We have completed the installation of 2km of fuel line at the Marine Fuel Tank Farm .Our crew is now transitioning to work on a tank installation project at the main mine location which is approximately 100km south of the Fuel Tank Farm.

## TRAINING UPDATE

We recently completed Leadership Training for our Fire Protection Forepersons and Service Techs in both Nisku and Burnaby. Focus was on leadership accountability and decision making, alongside a review of our COR audit results and a discussion on Site Inspections Key points covered for leadership included:

- ⇒ Leaders take responsibility for decisions
- ⇒ Leaders take responsibility for communication
- ⇒ Leaders always think and say "We instead of I"
- ⇒ Leaders run effective and efficient meetings
- ⇒ Leaders transform problems into constructive feedback





**Have you ever noticed that anyone driving slower than you is an Idiot?  
And anyone driving faster than you is a Maniac?**



### WELCOME TO THE TEAM!

**Sonja Welti** - has joined our accounting team for a maternity leave coverage assignment in our Accounts Payable Department as **Chantelle Moss** is taking time off to welcome a new child into her family.

**Valentina Cancino** - has accepted a position in our Fire Protection Service Division as the Dispatch and Administrative Coordinator.

#### The Aussies are coming!

Joining our Industrial Fire Protection Design Team (they will remain based in Australia with a 17hr time change!) are:

**Allan Thompson** - due to his unique experience in Industrial Fire Fighting, Allan brings strong knowledge and understanding of performance based local and international codes to meet the requirements of all large-scale industrial projects.

**Trent Jeude** - Trent has extensive fire protection and design experience in all mining and process risks through many years of working in the domestic and international resource sector.

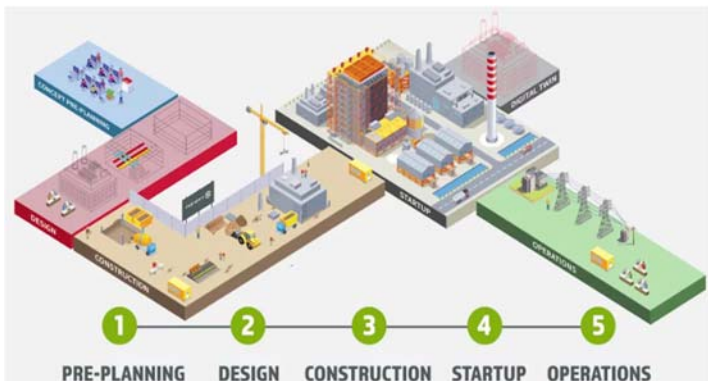
In addition to the new PMIS software we are in the process of preparing for implementation (InEight), Gisborne is also updating our tool and equipment management software. **TOOLHOUND** was the chosen product to assist us in improving our management and tracking of tools and equipment.

Using a comprehensive database, coupled with a simple and accurate bar code or RFID-based transaction system, **TOOLHOUND** efficiently tracks the issuance and return of tools, equipment and consumables to contractors and employees, and the transfer of equipment between various job sites and tool crib locations.

Once we have completed the data input and completed the inventory processes, we will be providing training to all key users and implementing the system for all projects.



Our design and implementation team, being lead by **Matt Sarkor** and **Daniel Lefebvre**, continues to make good progress on the planning, implementation, and training scheduling of our new PMIS software. The implementation goal is to be operational with INEIGHT by the end of the first quarter of 2023.



*My wife said that if I wasn't so pedantic we'd have less arguments. I said, "fewer arguments". I don't remember much after that.*



## CONSTRUCTIVE CONVERSATIONS

Do you work in construction?

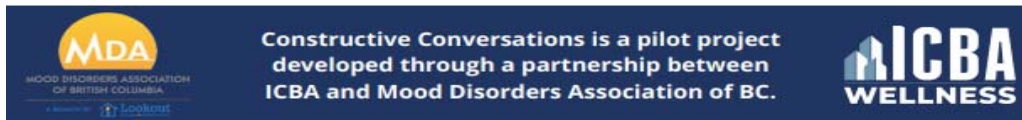
Does the idea of being able to talk openly with other boots-on-the-ground construction workers from the location of your choice sound helpful?

**Join a virtual Constructive Conversations session.**

- Virtual sessions offered through Zoom - join from anywhere you have an internet connection.
- Bi-weekly Wednesdays 5-6pm, starting August 24.
- Led by a trained peer facilitator, no therapists.

If you want to join, scan the QR code to sign up and receive the Zoom link. For more information, email [constructiveconversations@icba.ca](mailto:constructiveconversations@icba.ca)

Your details will be kept 100% confidential.



Gisborne is a participant in the ICBA Wellness Program. For more information please contact either **Shayne Taylor** or **Ian Gibson**, Gisborne's designated wellness champions, at 604.520.7300.

## BENEFIT INFORMATION

### CLAC MEMBERS

Benefit Office	1.888.600.2522
Forms/courses/contact info	<a href="http://www.clac.ca">www.clac.ca</a>
CLAC Retirement Member Care	1.800.210.0200
Employee Assistance Program	1.844.880.9142
<a href="http://www.workhealthlife.com">http://www.workhealthlife.com</a>	

### CLAC OFFICES:

Lower Mainland Office	1.800.331.2522
Fort St John Office	1.800.331.2522
Kelowna Office	1.866.757.2522
Edmonton Office	1.877.863.5154
Calgary Office	1.403.686.0288

### GISBORNE STAFF / NON-UNION EMPLOYEES

RRSP Questions <https://www.canadalife.com/>

**NOTE - As of October 01, 2022 we will be switching benefit coverages from Industrial Alliance to Manulife for all staff and non-union field employees. Notices will be sent to all currently covered by Industrial Alliance over the coming weeks. Ensure you submit all IA claims prior to September 30, 2022.**